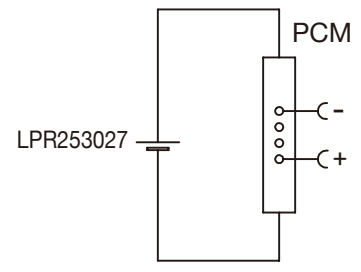


Circuit Diagram



# Specification

Lithium Polymer Battery Pack LPR253027 135mAh 3.7V with Protection Circuit Module (PCM)  
 This data sheet describes the requirements and properties of lithium polymer rechargeable battery pack manufactured by LiPol Battery Co., Ltd - China

## Mechanical Characteristics

- Cell ▶ LPR253027
- PCM ▶ Yes
- NTC ▶ No
- Configuration ▶ 1S1P
- Weight ▶ appr. 2.7g

## Electrical Specification

- Rated Capacity ▶ 135mAh min, 140mAh typ.
- Nominal Voltage ▶ 3.7V
- Wat-Hour Rating ▶ 0.499Wh
- Max. Operating Voltage Range ▶ 2.75V to 4.20V
- Max. Charge Voltage ▶ 4.2V ±50mV
- Max. Charge Current ▶ 67.5mA
- Max. Continuous Discharge Current ▶ 135mA
- Discharge Cut Off ▶ 2.75V
- Internal Impedance ▶ <200mΩ
- Expected Cycle Life @ (0.5C/0.5C) @ 23±5°C ▶ 500 cycles ≥ 80%

## Cell Protection

- Overcharge Detection ▶ 4.275 ±50mV (0.7 to 1.3sec. delay, release 4.275V ±50mV)
- Overdischarge Detection ▶ 2.75V ±50mV (14 to 26msec. delay, resume 2.50V ±50mV)
- Overcurrent Detection ▶ 2A to 4.5A (8 to 16msec. delay)

## Ambient Conditions

- Charge Temp. Range ▶ 0 to +45°C
- Discharge Temp. Range ▶ -20 to +60°C
- Storage Temp. Range ▶ 1 year at -20 to +30°C >70%
- ▶ 3 months at -20 to +45°C >70%
- ▶ 1 month at -20 to +60°C >70%
- Humidity ▶ 65 ±20%RH

## Environmental and Safety

Please follow LiPol Handling and Safety Precautions for Lithium Polymer Battery. This battery meets the requirements of Battery Directives, and the battery parts are IEC 62133 & RoHS-Compliant. For more safety precautions and performance standards, please go to [www.lipolbattery.com/support.html](http://www.lipolbattery.com/support.html)

Mae in mm All dimensions in mm	Freimatoleranzen Generaltolerances		Date	Name	<b>LiPol Battery</b>	Zchnng. / Dwg. Nr.	Index	
			Erst. / Orig	25.05.2020				Xie Qingfang
Als Betriebsgeheimnis anvertraut, alle Rechte vorbehalten	up to 6	0,1	Gepr./check	25.05.2020				Guo Daxia
	over 6 up to 30	0,2	Benennung/ Designation					3
Proprietary data, company confidential, all rights reserved.	over 30 up to 100	0,3	LPR253027		support@lipolbattery.com	www.LiPolBattery.com		
	over 100	0,5	Origin:					