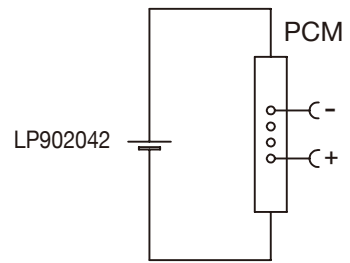


Circuit Diagram



Specification

Lithium Polymer Battery Pack LP902042 800mAh 3.7V with Protection Circuit Module (PCM)
 This data sheet describes the requirements and properties of lithium polymer rechargeable battery pack manufactured by LiPol Battery Co., Ltd - China

Mechanical Characteristics

- Cell ▶ LP902042
- PCM ▶ Yes
- NTC ▶ No
- Configuration ▶ 1S1P
- Weight ▶ appr. 16g

Electrical Specification

- Rated Capacity ▶ 800mAh min, 810mAh typ.
- Nominal Voltage ▶ 3.7V
- Wat-Hour Rating ▶ 2.960Wh
- Max. Operating Voltage Range ▶ 2.75V to 4.20V
- Max. Charge Voltage ▶ 4.2V ±50mV
- Max. Charge Current ▶ 400mA
- Standard Charge Current ▶ 160mA
- Max. Continuous Discharge Current ▶ 800mA
- Standard Discharge Current ▶ 400mA
- Discharge Cut Off ▶ 2.75V
- Internal Impedance ▶ <200mΩ
- Expected Cycle Life @ (0.5C/0.5C) @ 23±5°C ▶ 500 cycles ≥ 80%

Cell Protection

- Overcharge Detection ▶ 4.275 ±50mV (0.7 to 1.3sec. delay, release 4.275V ±50mV)
- Overdischarge Detection ▶ 2.75V ±50mV (14 to 26msec. delay, resume 2.50V ±50mV)
- Overcurrent Detection ▶ 2A to 4.5A (8 to 16msec. delay)

Ambient Conditions

- Charge Temp. Range ▶ 0 to +45°C
- Discharge Temp. Range ▶ -20 to +60°C
- Storage Temp. Range ▶ 1 year at -20 to +30°C >70%
- ▶ 3 months at -20 to +45°C >70%
- ▶ 1 month at -20 to +60°C >70%
- Humidity ▶ 65 ±20%RH

Environmental and Safety

Please follow LiPol Handling and Safety Precautions for Lithium Polymer Battery. This battery meets the requirements of Battery Directives, and the battery parts are IEC 62133 & RoHS-Compliant. For more safety precautions and performance standards, please go to www.lipolbattery.com/support.html

Mae in mm	Freimatoleranzen	Date	Name	+ LiPol Battery		
All dimensions in mm	Generaltolerances	Erst. / Orig	10.12.2020		Xie Qingfang	
Als Betriebsgeheimnis anvertraut, alle Rechte vorbehalten	up to 6	· 0,1	Gepr./check	10.12.2020	Guo Daxia	
	over 6	· 0,2				
Proprietary data, company confidential, all rights reserved.	up to 30	· 0,2	Benennung/ Designation		Zchnng. / Dwg. Nr.	
	over 30	· 0,3	LP902042			3
	up to 100	· 0,3	LP902042			
	over 100	· 0,5	Origin:	support@lipolbattery.com	www.LiPolBattery.com	