

30  
double-sided  
adhesive tape

40  
adhesive tape kapton

20  
PCM

10  
LP500935

60  
wire black (-)  
AWG26 UL1571

50  
wire red (+)  
AWG28 UL1571

40  
adhesive tape  
kapton (2x)

5.0  $+0.3$   
 $-0.3$

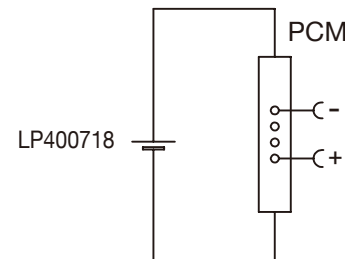
9  $+0.5$   
 $-0.5$

LiPo Battery 3.7V  
LP500935 120mAh

36  $+1.0$   
 $-1.0$

50  $+3.0$   
 $-3.0$

Circuit Diagram



## Specification

Lithium Polymer Battery Pack LP500935 120mAh 3.7V with Protection Circuit Module (PCM)  
This data sheet describes the requirements and properties of lithium polymer rechargeable battery pack manufactured by LiPol Battery Co., Ltd - China

### Mechanical Characteristics

Cell	▶ LP500935
PCM	▶ Yes
NTC	▶ No
Configuration	▶ 1S1P
Weight	▶ appr. 2.4g

### Electrical Specification

Rated Capacity	▶ 120mAh min, 150mAh typ.
Nominal Voltage	▶ 3.7V
Wat-Hour Rating	▶ 0.444Wh
Max. Operating Voltage Range	▶ 2.75V to 4.20V
Max. Charge Voltage	▶ 4.2V $\pm$ 50mV
Max. Charge Current	▶ 60mA
Standard Charge Current	▶ 24mA
Max. Continuous Discharge Current	▶ 120mA
Standard Discharge Current	▶ 60mA
Discharge Cut Off	▶ 2.75V
Internal Impedance	▶ <200m $\Omega$
Expected Cycle Life @ (0.5C/0.5C) @ 23 $\pm$ 5 $^{\circ}$ C	▶ 500 cycles $\geq$ 80%

### Cell Protection

Overcharge Detection	▶ 4.275 $\pm$ 50mV (0.7 to 1.3sec. delay, release 4.275V $\pm$ 50mV)
Overdischarge Detection	▶ 2.75V $\pm$ 50mV (14 to 26msec. delay, resume 2.50V $\pm$ 50mV)
Overcurrent Detection	▶ 4A to 4.5A (8 to 16msec. delay)

### Ambient Conditions

Charge Temp. Range	▶ 0 to +45 $^{\circ}$ C
Discharge Temp. Range	▶ -20 to +60 $^{\circ}$ C
Storage Temp. Range	▶ 1 year at -20 to +30 $^{\circ}$ C >70%
	▶ 3 months at -20 to +45 $^{\circ}$ C >70%
	▶ 1 month at -20 to +60 $^{\circ}$ C >70%
Humidity	▶ 65 $\pm$ 20%RH

### Environmental and Safety

Please follow LiPol Handling and Safety Precautions for Lithium Polymer Battery.  
This battery meets the requirements of Battery Directives, and the battery parts are IEC62133-2-2017 & RoHS-Compliant. For more safety precautions and performance standards, please go to [www.lipolbattery.com/support.html](http://www.lipolbattery.com/support.html)

Mae in mm All dimensions in mm	Freimatoleranzen Generaltolerances	Date 05.03.2021	Name Xie Qingfang	<b>LiPol Battery</b>	Index
Als Betriebsgeheimnis anvertraut, alle Rechte vorbehalten	up to 6 · 0,1 over 6 up to 30 · 0,2	Erst. / Orig 05.03.2021	Gepr./check Guo Daxia		
Proprietary data, company confidential, all rights reserved.	over 30 up to 100 · 0,3 over 100 · 0,5	Benennung/ Designation LP500935		Zchg. / Dwg. Nr. 3 FD_0935_70	
			Origin:	support@lipolbattery.com	www.LiPolBattery.com